



# A warm welcome

**T**he entrance garden to a home contributes much to the warmth of the welcome, and also provides the frame to the house itself.

It needs to enhance the building, whether by way of complement or contrast, provide clear, unimpeded access and deliver a warm 'hello' in the process!

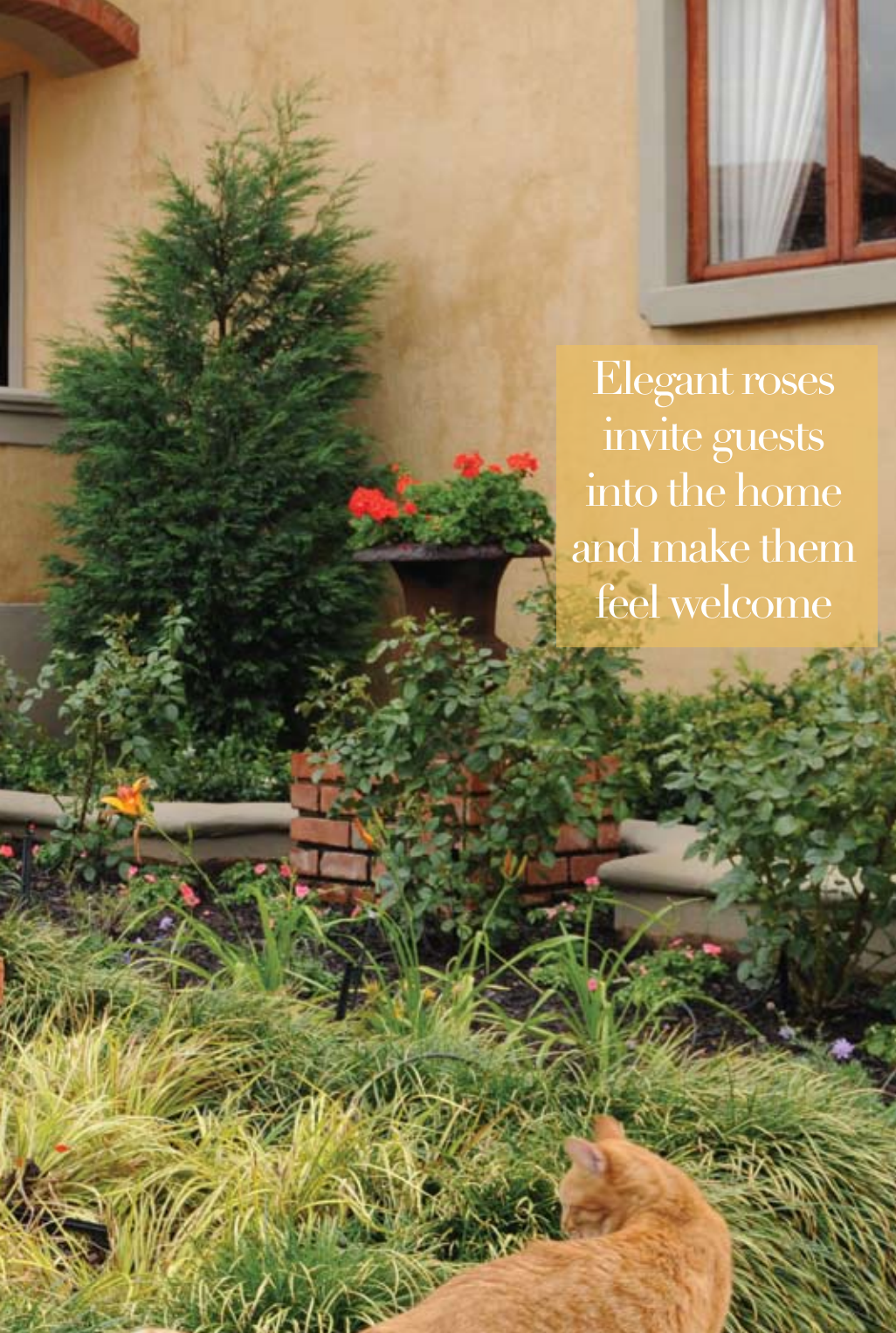
This month's garden has a delightfully

sunny pavement area, which is the ideal space for roses. The ground pattern of the garden is formal and geometric, and plant choices have been kept limited to aid the creation of a strong but minimalistic statement. The roses have truly been given centre stage here!

Tall *Cupressocyparis leylandii* conifers provide height at the back, nestling in fragrant star jasmine. Roses in shades of apricot, oranges and yellows adorn the central space and receive seasonal colour at

their feet when the mood takes the owner. Bark mulching provides practical access to the roses for maintenance and does much for the prolific health of these lucky specimens. They are truly loved and almost as spoilt as the resident cat!

Day lilies in the same colour palette are planted in front of the roses, alternated by *Scabiosa*, whose lovely blue colour links with the blue-grey paint accents of the house. The foreground has proud urns on stately platforms, displaying vibrant, red geraniums.



Elegant roses  
invite guests  
into the home  
and make them  
feel welcome



The platform, in a red brick, is framed by yellow *Acorus* grass, which is in turn contrasted by a carpet of lush *Mondo* grass.

The stairs to the front door are framed by small terracotta pots, planted with apricot *Kalanchoe*. A wrought iron representation of the tree of life decorates the platform where visitors wait to be received – a fitting tribute to the care which this garden receives.

The warm colours of the geraniums and roses are continued in some of the interior decorating choices, creating wonderful unity.

The cool, neutral colours of the house provide an unobtrusive backdrop for this vivid colour display and reflects the nature of the lady of the house perfectly – timeless, elegant and vibrantly alive!

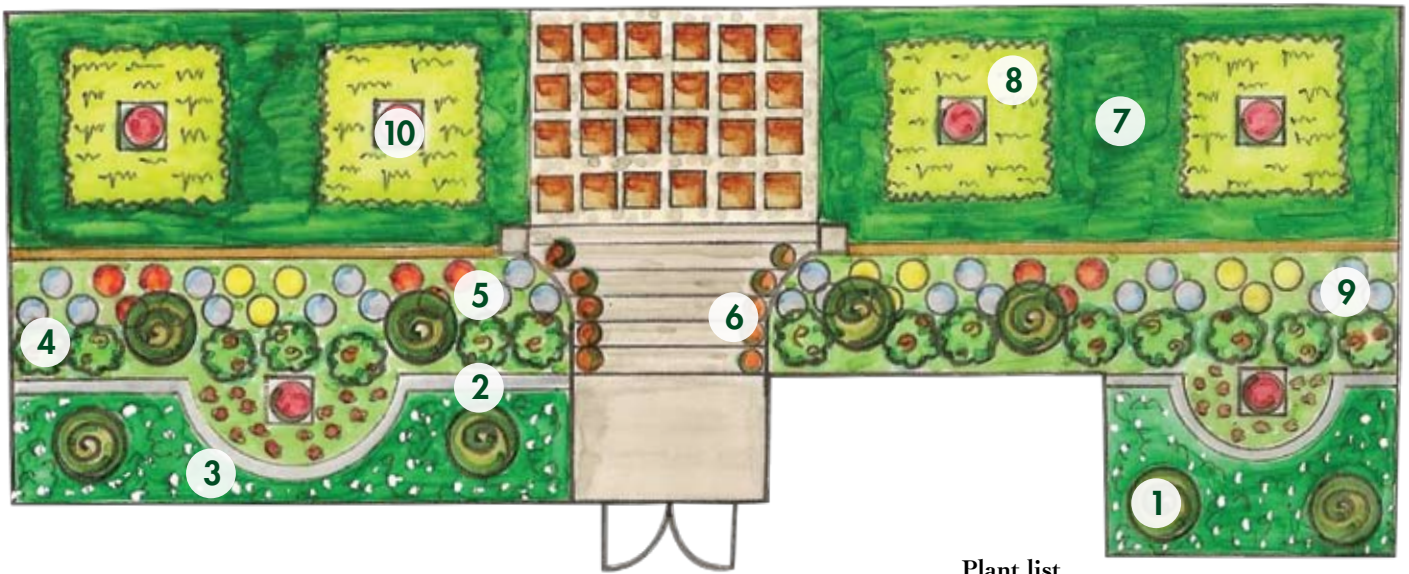
The long, thin aspect of the garden is 'broken' by the strong focal points, which are further strengthened by the bright colour of the geraniums in the urns. The space is effectively contracted and feels in much more balanced proportion than what it actually is.

## 7 easy steps to creating an entrance garden

- 1 Consider what will suit the building, as the entrance garden has the house as its backdrop and needs to enhance it. The garden is the final cherry on the cake.
- 2 Make it easy for visitors to see where to enter the premises – this is the first step towards making them feel welcome.
- 3 Provide clear and unimpeded access for two people to walk side by side where possible. It generally feels restrictive if one has to fall into single file at the approach to the home.
- 4 Many buildings are very imposing and you may need focal points with significant visual weight to counter the buildings as it is often not possible to provide adequate physical height.
- 5 Security concerns would dictate clear visibility in most cases.
- 6 From time to time, enter your property the way your visitors have to. Homeowners usually enter through a different route and often do not appreciate that the entrance to their home is perhaps not welcoming or easy to navigate.
- 7 And remember, less is more!

WORDS: Renée Wright, PHOTOGRAPHY: Eliza Roux





Plant list

1. *Cupressocyparis leylandii*
2. *Impatiens 'Apricot Salmon'*
3. *Trachelospermum jasminoides*
4. *Rosa* (Orange and Yellow Hybrid Tea)
5. *Hemerocallis* (Orange and Yellow)
6. *Kalanchoe blossfeldiana*
7. *Ophiopogon japonicus*
8. *Acorus gramineus 'Golden Edge'*
9. *Scabiosa africana* (Blue)
10. *Pelargonium 'Red Velvet'*



The warm colours of the geraniums and roses are continued in some of the interior decorating choices

